

Fitting Instructions

Subaru Anti-Lift Kit

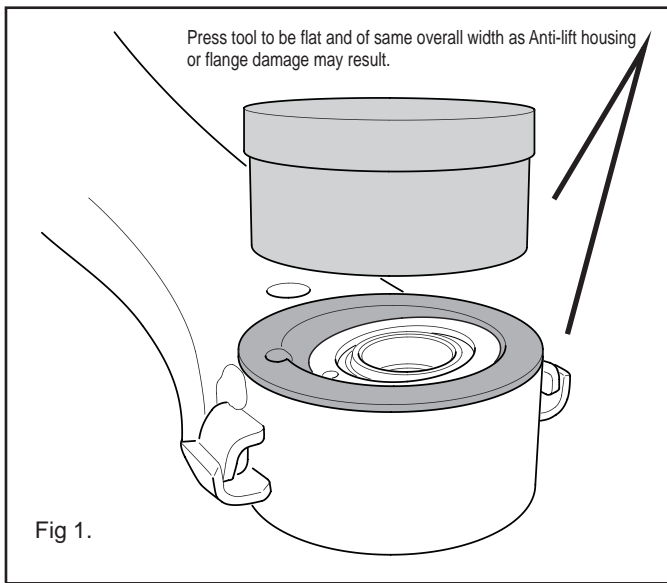
Code: Z5120

Application: KCA334M (MOTOR SPORT ONLY) - Front Caster & anti-lift kit. Suit Subaru Impreza including WRX and 9/07 - on

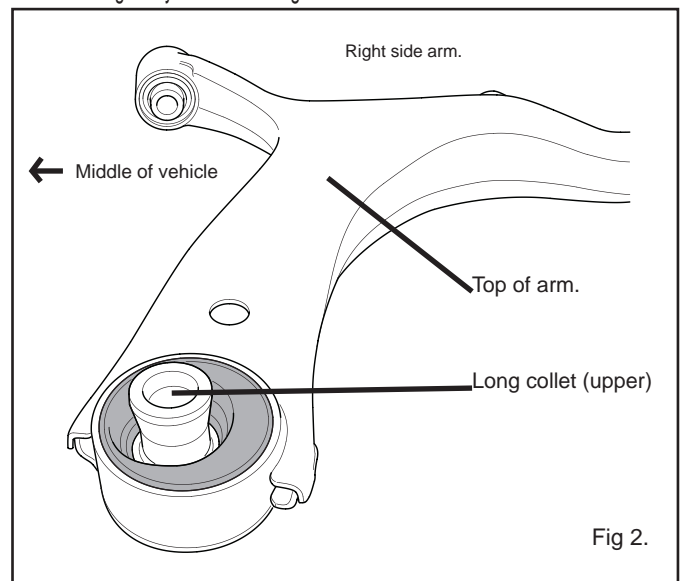
This kit is designed to add approx 0.5 deg static positive caster to both front wheels while changing the nature of front anti-dive and lift. This zero compliance design will also maintain higher dynamic positive castor. By changing the front control arm geometry, the new alloy mounts will change front suspension attitude. This leads to superior traction under power including cornering, dramatically reducing understeer and front wheel spin.

The additional castor coupled with the new alloy design will dramatically sharpen initial turn-in response, then forcing more consistent alignment angles through the corner due to the zero compliance bearing.

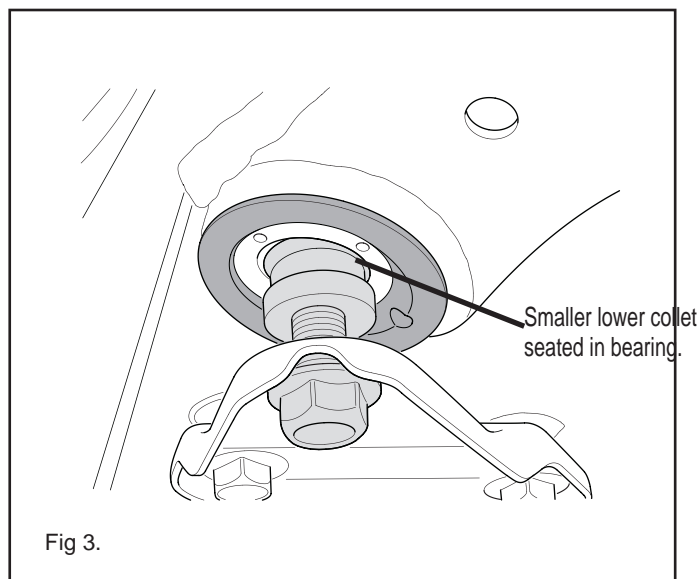
1. Remove both lower control arms and press out the existing rear bush.
2. Inspect the eyelet and check there is no residual dirt or rubber on mounting surface.



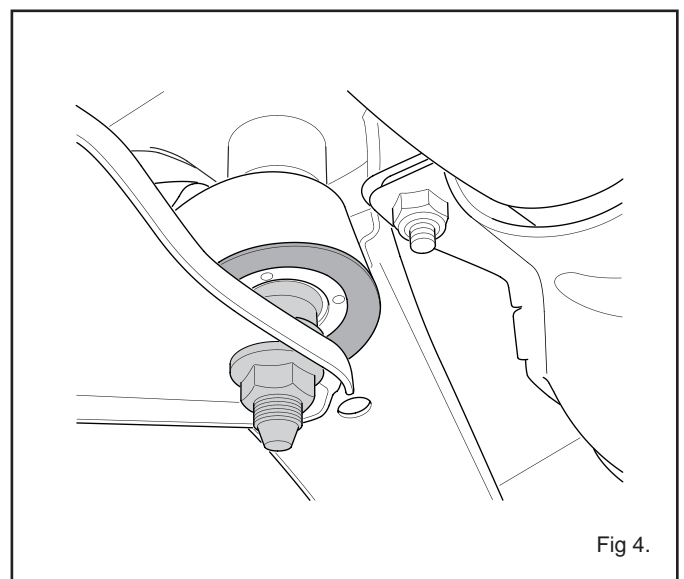
3. Align the Anti-lift housing as per fig 2, note the bearing is closest to the centre of vehicle (Whiteline logo facing upwards in the vehicle).
4. When pressing the Anti-lift housing in, make sure press tool is of equivalent diameter and stretches entirely across the anti-lift flange otherwise damage to the flange may result. Refer fig 1.



5. Once the Anti-lift housing is in place, mount the arm in vehicle.
6. Before tightening mounting bolts ensure the upper and lower collets are seated in the bearing.



7. Once fitted, the Anti-lift housing should appear as per fig 4 below.
8. The vehicle will now need to be wheel aligned immediately after installation. Recheck all mounting points after initial 100kms



Warning: Please drive carefully while you accustom yourself to the changed vehicle behaviour.